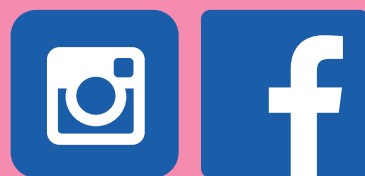


Let's get to know
each other better

THE MAIN LIBRARY OF AGH UNIVERSITY OF SCIENCE AND TECHNOLOGY



@BGAGH.Krakow

www.bg.agh.edu.pl



Come on in!

The Lending Room can be used by:

- students, PhD students, AGH UST staff
- students, PhD students and staff of Kraków's public universities
- others in accordance with the Regulations of using the collections and services of the Main Library of AGH UST

All library collections may be used by all interested parties:

- on site in the Reading Rooms

You must have an active library account to use all library services. Need more information? Check out Terms and Conditions available at: www.bg.agh.edu.pl





To sign up...

if you are a first-year student at AGH -
choose one of these options:

1

If you filled out the declaration during recruitment - wait for your sign-up confirmation email.

2

Use the remote sign-up form on the Library website - wait for your confirmation email.

3

Come to the Lending Room with your student ID and talk with the librarians.



To sign up...

in other cases - select one of these options

1

Use the remote sign-up form on the Library's website - wait for your sign-up confirmation email.

2

Come to the Lending Room with your student/PhD ID or ID/passport and talk with the librarians.

A complete list of those entitled to use the Lending Room is available in the Library Rules and Regulations.

Your most important card - your library card



If you have a student/doctoral ID card, it is also your library card. Its number can be found on the back under the barcode.

If you do not have a student ID, you will receive a free library card when you sign up. Its number can be found on the back under the barcode.

Login - your library card number

Password - the first password is your PESEL number, change it after the first login★

★ If you forget your password, a new one can be generated in the library catalog.



Login and password

Let's begin!



SEARCH

[Catalogue Quick Search](#) [AGH websites](#) [EBSCO Discovery Service](#) [EBSCO Publication Finder](#)

Search Online Catalogue:

[Check Your Library Account](#) [Register with the Library](#)

AGH Catalogue

SEARCH:

www.bg.agh.edu.pl

analiza matematyczna w zadaniach Search

Advanced Search

Refine your search

Additional Terms Add

- Genre
 - zadania i ćwiczenia (94)
 - podręczniki akademickie (1)
- Publication Year
 - 2010 - 2019 (19)
 - 2000 - 2009 (20)
 - 1990 - 1999 (18)
 - 1980 - 1989 (8)
 - 1970 - 1979 (17)
 - Show more...
- Nature of Content
 - Handbooks (48)
- Literary Form
 - Not fiction (not further specified) (64)
- Location
 - AGH-Biblioteka Główna (94)
 - BG- Magazyn (79)
 - BG-Czytelnia Główna (6)
 - BG-Strefa Wolnego Dostępu (60)
 - WEiP-Wydz. Energetyki i Paliw (6)
 - Show more...

Current Search: analiza matematyczna w zadaniach

Results 1 to 20 of 96

Sort by Publishing Date (Newest First)

Add Page To Cart Add All To Cart

Results per page 20

1 | 2 | 3 | 4 | Next >

1. Analiza matematyczna w zadaniach. 1 / W. Kryszicki, L. Włodarski.



Kryszicki, Włodzimierz (1905-2001).
Edition Wydanie dwudzieste dziewiąte, 16 dodruk.
Publication Warszawa : Wydawnictwo Naukowe PWN, 2019.
Physical Description 510 stron : ilustracje ; 24 cm.

6 of the 19 copies are available
WILIGZ-Biblioteka Wydziałowa (6 available)

Add To Cart

2. Analiza matematyczna w zadaniach. 1 / W. Kryszicki, L. Włodarski.



Kryszicki, Włodzimierz (1905-2001).
Edition Wydanie dwudzieste dziewiąte, 17 dodruk.
Publication Warszawa : Wydawnictwo Naukowe PWN, 2019.
Physical Description 510 stron : ilustracje ; 24 cm.

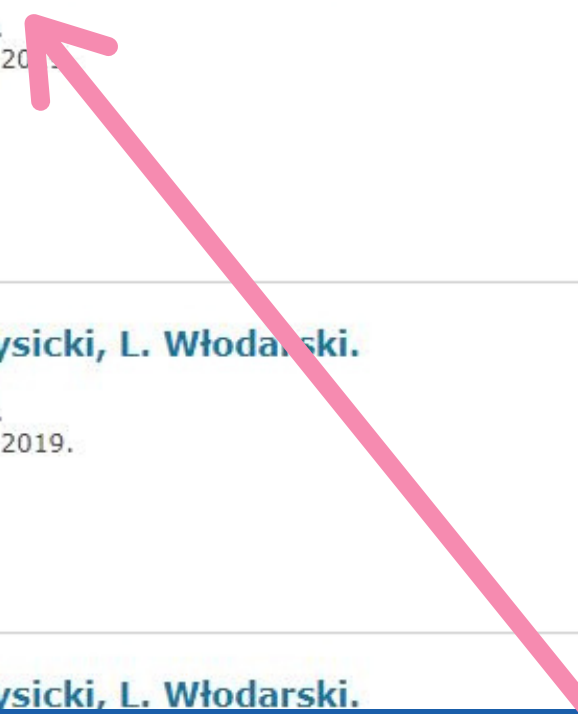
No available copies

Add To Cart

3. Analiza matematyczna w zadaniach. 1 / W. Kryszicki, L. Włodarski.



here you can sort the results (e.g. by latest issue)



you can narrow your search here

here you can see your search results, if you find an item that interests you - click on its title to check availability





Login Cart Heading Search Search History Clear Session
GDPR

Search Search
[Advanced Search](#)

Analiza matematyczna w zadaniach. 1 / W. Krysicki, L. Włodarski.
Krysicki, Włodzimierz (1905-2001).
Record 6 of 96 < Previous Next > Return to search

Edition Wyd. 29, 13 dodr.
Publication Warszawa :
Wydawnictwo
Naukowe PWN,
2015.
Physical Description 510 s. : il. ; 24 cm.
Access UWAGA: Dostęp dla
pracowników,
doktorantów i
studentów AGH
posiadających
aktualne konto w BG
AGH
<http://wbg2.bg.agh.edu.pl/han/ibuk/libra.ibuk.pl/book/145398>



here you will find a detailed description of the selected item, including information about access to the online version

Add To Cart

Copies MARC Record Details

Location Filter
Show All

Showing 1 to 10 of 30
<< < 1 2 3 > >>

	Shelf Location	Call Number	Second Call Number	Units	Public Note	Barcode	Full text	Status	
<input type="checkbox"/>	BG- Magazyn	II 261681				1000255673		Available	Request
<input type="checkbox"/>	BG-Strefa Wolnego Dostępu	W 77467/3	C			1000256877		Available	Map

it is a copy from the Storeroom, to order it click "Request", log in, choose a place to pick it up (Wypożyczalnia) and confirm your order by clicking "OK"



↑ it is a Open Stacks item - to borrow one, remember the section symbol and go to the Open Stacks Zone

AVAILABLE FOR LENDING

LOCATION:

- BG-Strefa Wolnego Dostępu (work and borrow independently)
- BG-Magazyn (order via the Catalogue and pick up at the Circulation Desk)



for the curious



Locations

- BG-Czytelnia Główna
- BG-Egzemplarz do Czytelni
- BG-Oddział Informacji Naukowej
- BG-Zbiory Specjalne

indicates collections you can use on site in our Reading Rooms

Locations

- BG-Dostęp online

means collections in electronic version, available for employees, doctoral students and students of AGH UST with a valid account in the Main Library

Location eg:

- WEAIiB-Biblioteka Wydziałowa
- WILiGZ-Biblioteka Wydziałowa
- WIMiC-Biblioteka Wydziałowa

means that given item can be found in the indicated Faculty Library and should be requested there

ask librarians for other locations!



library drop box - a device for returning books on your own

- at any time, including holidays and days off from work and study
- return only items borrowed from the Main Library
- books should be placed one at a time and always with the back facing inwards
- the drop box is emptied daily, the returns are registered no later than the following working day

**and the returns...
to the drop box!**





MAIN READING ROOM

- books and handbooks
- scientific journals
- daily press



READING ROOM FOR STANDARDS, PATENTS AND CARTOGRAPHIC COLLECTION

- access to Polish and foreign standards
- patent information
- doctoral dissertations
- maps, atlases, city plans
- access to databases



INFORMATION SCIENCE READING ROOM

- access to databases
- e-journals and e-books
- training in information retrieval



remember,
to use them
have your ID
card
or your library
card

Lockers

If you wish, you can leave your belongings in the lockers in the library.



YOUR SPACE TO LEARN



- Self Study Reading Room
- Open Stacks Zone
- Main Reading Room
- Information Science Reading Room
- Reading Room for Standards, Patents and Cartographic Collection.



Explore the advantages of e-resources



- Electronic collections of full-text textbooks, books and journals, full-text and bibliographic-abstract databases
- Remote access (also from home) and on-site access in the Library
- E-resources information and access from the Main Library website (E-resources and catalogs tab)

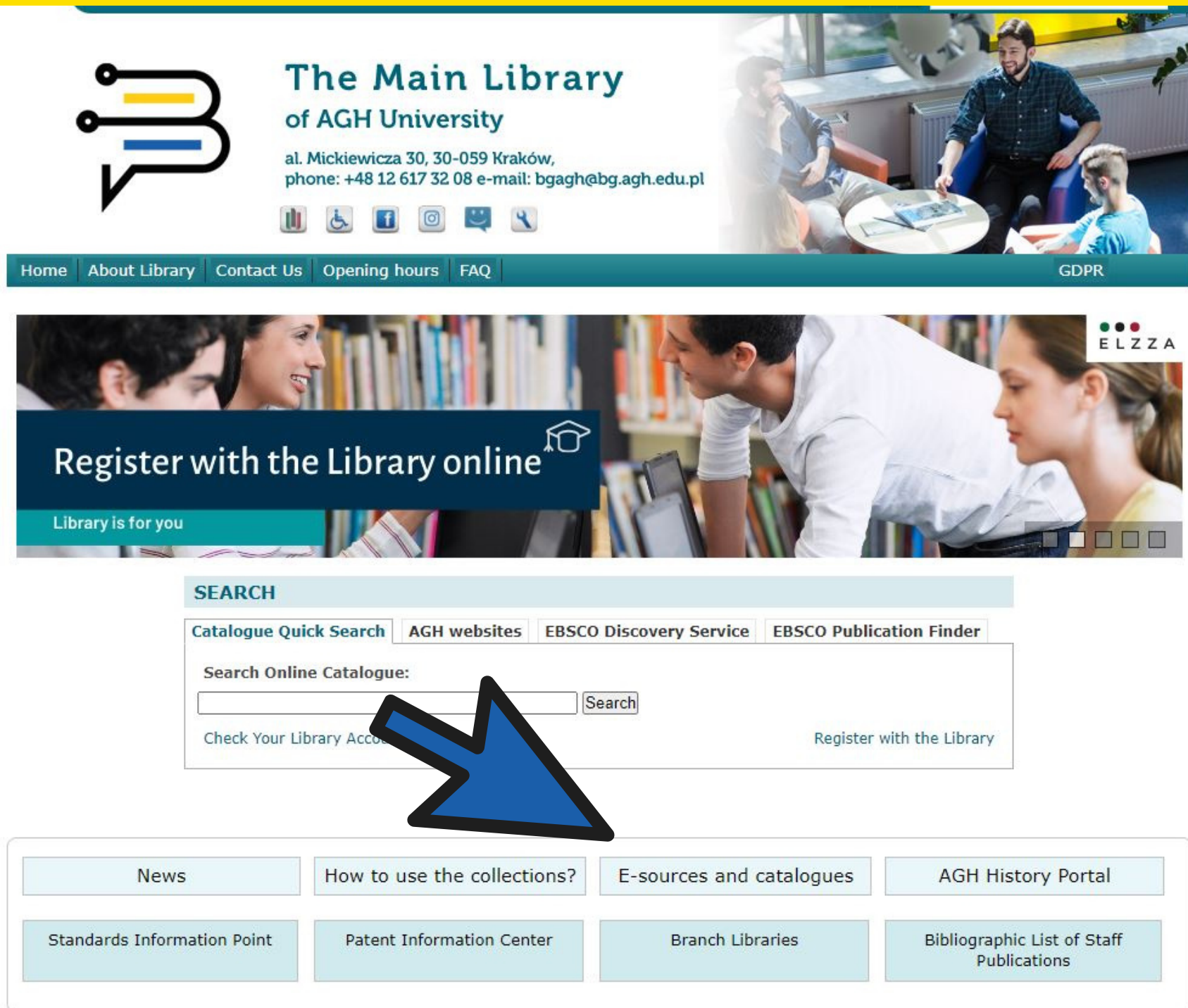


eResources Who has access?

AGH EMPLOYEES,
DOCTORAL STUDENTS
AND STUDENTS
FROM ANY
PLACE IN THE WORLD

IN ORDER TO USE THE SERVICE
ONE MUST HAVE AN ACTIVE LIBRARY
ACCOUNT IN THE MAIN LIBRARY

Where to look for e-resources?



The Main Library of AGH University

al. Mickiewicza 30, 30-059 Kraków,
phone: +48 12 617 32 08 e-mail: bgagh@bg.agh.edu.pl

Home About Library Contact Us Opening hours FAQ GDPR

Register with the Library online

Library is for you

SEARCH

Catalogue Quick Search AGH websites EBSCO Discovery Service EBSCO Publication Finder

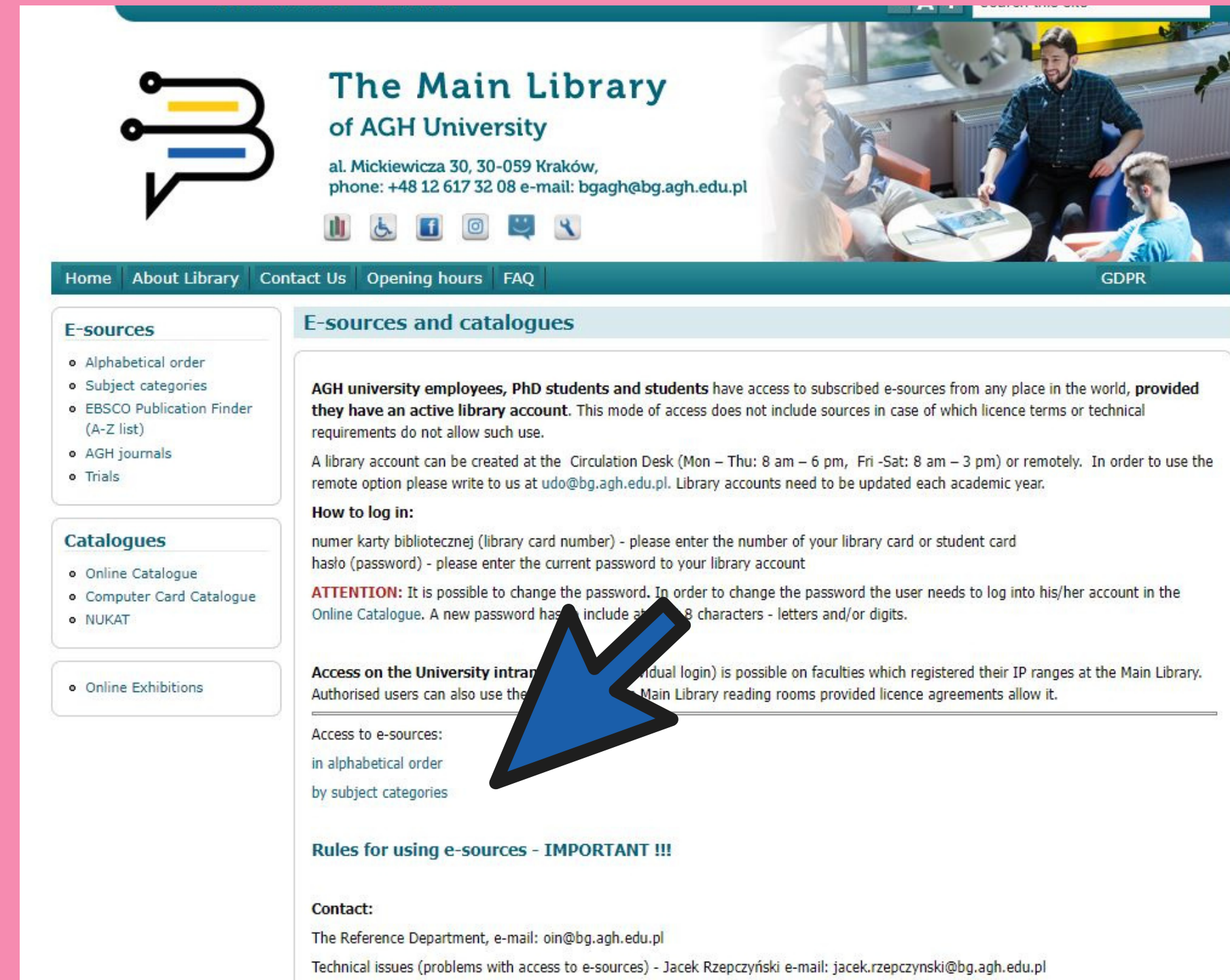
Search Online Catalogue:

Search

Check Your Library Account Register with the Library

News How to use the collections? E-sources and catalogues AGH History Portal

Standards Information Point Patent Information Center Branch Libraries Bibliographic List of Staff Publications



The Main Library of AGH University

al. Mickiewicza 30, 30-059 Kraków,
phone: +48 12 617 32 08 e-mail: bgagh@bg.agh.edu.pl

Home About Library Contact Us Opening hours FAQ GDPR

E-sources

- Alphabetical order
- Subject categories
- EBSCO Publication Finder (A-Z list)
- AGH journals
- Trials

Catalogues

- Online Catalogue
- Computer Card Catalogue
- NUKAT

- Online Exhibitions

E-sources and catalogues

AGH university employees, PhD students and students have access to subscribed e-sources from any place in the world, **provided they have an active library account.** This mode of access does not include sources in case of which licence terms or technical requirements do not allow such use.

A library account can be created at the Circulation Desk (Mon – Thu: 8 am – 6 pm, Fri -Sat: 8 am – 3 pm) or remotely. In order to use the remote option please write to us at udo@bg.agh.edu.pl. Library accounts need to be updated each academic year.

How to log in:

numer karty bibliotecznej (library card number) - please enter the number of your library card or student card
hasło (password) - please enter the current password to your library account

ATTENTION: It is possible to change the password. In order to change the password the user needs to log into his/her account in the Online Catalogue. A new password has to include at least 8 characters - letters and/or digits.

Access on the University intranet (individual login) is possible on faculties which registered their IP ranges at the Main Library. Authorised users can also use the Main Library reading rooms provided licence agreements allow it.

Access to e-sources:
in alphabetical order
by subject categories

Rules for using e-sources - IMPORTANT !!!

Contact:
The Reference Department, e-mail: oin@bg.agh.edu.pl
Technical issues (problems with access to e-sources) - Jacek Rzepczyński e-mail: jacek.rzepczynski@bg.agh.edu.pl

here you will find all information about news, changes, events

you can also call or email us, we will be happy to help

STAFF MEMBERS STUDENTS search this site

The Main Library of AGH University

al. Mickiewicza 30, 30-059 Kraków,
phone: +48 12 617 32 08 e-mail: bgagh@bg.agh.edu.pl

Home About Library Contact Us Opening hours FAQ GDPR

Main Library invites you

Monday -Thursday 8.00 a.m - 7.45 p.m.
Friday 8.00 a.m. - 6.00 p.m.
Saturday 8.00 am. - 3.00 p.m.

[see details...](#)

SEARCH

Catalogue Quick Search AGH websites EBSCO Discovery Service EBSCO Publication Finder

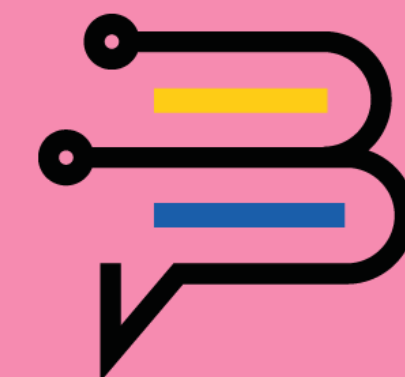
Search Online Catalogue:

[Check Your Library Account](#) [Register with the Library](#)

News	How to use the collections?	E-sources and catalogues	AGH History Portal
Standards Information Point	Patent Information Center	Branch Libraries	Bibliographic List of Staff Publications

Here you will find BiblioCHAT, an instant messaging service that provides real-time support from librarians

Let's stay in touch



FACEBOOK

informs and inspires all year round

INSTAGRAM

#korzystajzbiblioteki #bgagh #jabiblioteka

NEWSLETTER

lectures, exhibitions, trainings, trial access

KEEP IN TOUCH

